



MASS ADVANTAGE

www.MassAdvantageOTC.com



Over-the-Counter (OTC) Benefit Catalog 2023

A COMPLIMENTARY

BENEFIT

DESIGNED FOR YOU.

H7670_23651_M Accepted
H9904_23652_M Accepted



Download the
Mobile App



Order Online



REMEMBER TO KEEP THIS CATALOG

You will want to reference this catalog each time you place your order.

As a member of Mass Advantage, you have an Over-the-Counter (OTC) benefit every quarter. This benefit allows you to get OTC products you may need. Simply order online, use the mobile app, call Monday-Friday from 8 a.m. to 11 p.m. EST 1-855-243-1180 (TTY: 711), or mail your completed order form. Your order will be shipped directly to your door.

Be sure to use your benefit amounts before the end of the year.

TABLE OF CONTENTS



| | | | |
|---|----|---------------------------------------|----|
| HOW TO ORDER..... | 2 | First Aid..... | 13 |
| ORDER GUIDELINES | 3 | Foot Care..... | 14 |
| HOW TO USE YOUR OTC WEBSITE..... | 4 | Hemorrhoidal Preparations | 15 |
| HOW TO GET AND USE OUR | | Home Aids..... | 15 |
| OTC ANYWHERE MOBILE APP | 5 | Incontinence Supplies..... | 16 |
| Allergy | 6 | Motion Sickness | 17 |
| Antacids & Acid Reducers | 6 | Nutritional Supplements..... | 18 |
| Anticandidal (yeast)..... | 7 | Pain Relief Aids | 18 |
| Anti-diarrheal, Laxatives & Digestive | | Pain Relievers & Fever Reducers | 18 |
| Health..... | 7 | Pediculicide (Lice Treatment) | 19 |
| Anti-fungal..... | 8 | Skin & Sun Care..... | 19 |
| Bathroom Safety & Fall Prevention | 8 | Sleep Aids | 20 |
| Cold & Flu..... | 9 | Smoking Cessation | 20 |
| Cold Sore & Medicated Lip Products..... | 9 | Supports & Braces | 20 |
| Dental & Denture Care..... | 9 | Vitamins & Minerals | 22 |
| Diabetes Care | 11 | Wart Remover..... | 24 |
| Diagnostics | 11 | NOTICES..... | 25 |
| Eye & Ear Care..... | 12 | | |

HOW TO ORDER



Online

You may place an order online using your Mass Advantage OTC website at **www.MassAdvantageOTC.com**.

Remember to save your username and password to order again during your next benefit period.



Mobile App

You can place orders and manage your account from the convenience of your mobile phone (Apple and Android). To get started, just download the OTC-Anywhere mobile application. Similar to your OTC website, the mobile application is fast, easy, and secure. There is no charge to download or use the app. Internet access is required. Data rates may apply.



Mail

You may place your order by mailing in the order form to the OTC Servicing Center, PO Box 526266, Miami, FL 33152-9819.

If the end of the benefit period is approaching and you do not think your order form will be received in time, you may order online, through the mobile app, or call us.



Phone

If you have questions or would like to place your order over the phone, OTC advocates are available Monday through Friday from 8 a.m. to 11 p.m., ET at 1-855-243-1180 (TTY: 711). Please have your item number ready when you call.



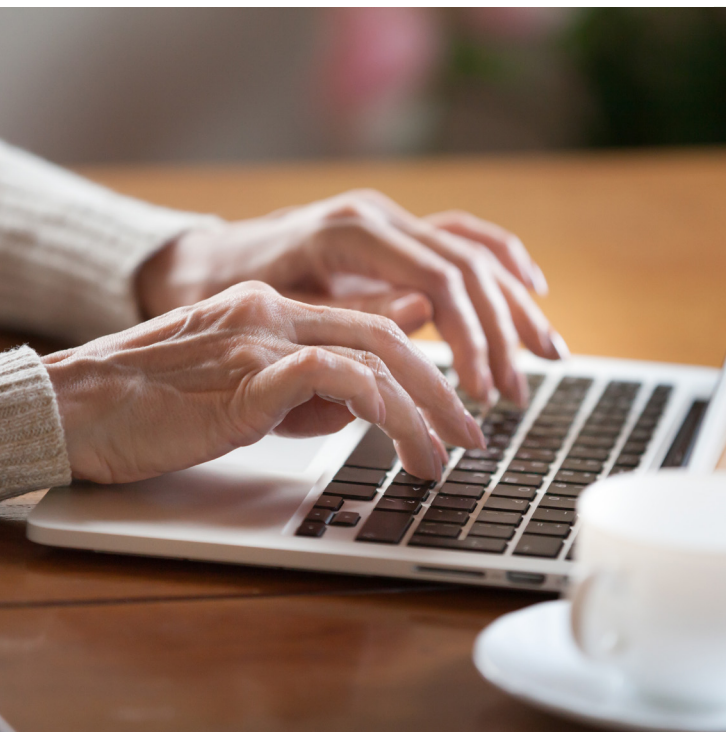
ORDER GUIDELINES



- Benefit amount is applied at the beginning of every quarter. (January, April, July, October) You must use your full benefit amount in one order. Unused benefits will carry over into the next quarter but not the next year.
- Your order total may not exceed your benefit amount. Cash, checks, credit cards or money orders are not accepted under this OTC benefit.
- Your order total will be applied to the benefit period in which the order is received.
- OTC products are intended for member use only to help with a health or medical need. Mass Advantage Health Plan prohibits the use of this benefit to order OTC items for family members and friends.
- The products are personal. For this reason, we don't allow returns or exchanges. Please call within 60 days of placing your order if:
 - You haven't received your order.
 - You received a defective or damaged item.
- Items in the OTC catalog occasionally change during the year. For the most up-to-date listing of OTC products available, go to **www.MassAdvantageOTC.com**, or your OTC-Anywhere mobile application.
- OTC items are available through home delivery only. Products may not be purchased at a local retail pharmacy, submitted for reimbursement or through any source other than the Mass Advantage OTC benefit channels listed above.
- In the event of market shortage, we reserve the right to limit quantities.
- All product and company names are trademarks™ or registered® trademarks of their respective holders. Use of them does not imply any affiliation with or endorsement by them.

Note: For delivery, please allow 5-7 business days from the time your order is placed.

HOW TO USE YOUR OTC WEBSITE



Online Access to Your OTC Benefit is Fast, Easy, and Secure!

Your OTC benefit website offers you many convenient features. You are able to...

- Browse the OTC products that are available to you
- Access a digital copy of your OTC catalog
- Monitor your available balance while you shop
- Track your order and view your order history
- Manage your account
- And more!

If you have already created an account online, just log in to get started!

If it's your first time ordering online, you will need to register and set up your account.

Registration is easy and takes only a few minutes to complete.

Access your Mass Advantage OTC website at www.MassAdvantageOTC.com, indicate that you are a first-time user by clicking on the Create Account button, and enter your information exactly as it appears on your Health Plan ID card. You will need the following:

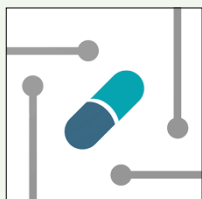
- First and last name
- Health Plan Member ID number (if your ID number contains any special characters, such as a hyphen (-) or an asterisk (*), enter only the numbers)
- State
- Date of birth as MM/DD/YYYY
- Current email address

You will then create a unique username and password for your account. You will be asked to choose and answer some security questions, so if you forget or misplace your username or password, we can recover your login information. Now you can log in and access your OTC benefit online, 24/7.

If you need any assistance, please call the Order Fulfillment Center Monday through Friday from 8 a.m. to 11 p.m., ET at 1-855-243-1180 (TTY: 711). Our friendly and knowledgeable OTC advocates are happy to help you take full advantage of your OTC benefit.

Note: Orders for the benefit period must be placed prior to midnight Eastern Time of the last day of the period.

HOW TO GET AND USE OUR OTC ANYWHERE MOBILE APP



OTC-Anywhere Mobile App
available on



Download Now



Get the App:

Find our OTC-Anywhere mobile app in the Apple or Google Play store. There is no charge to download or use this app. Data rates may apply.

Sign In:

Sign in with the same username and password that you set up when you registered on our OTC website.

If you don't already have a username and password, you will need to first register and set up your account on our OTC website or through the OTC-Anywhere app.

Our OTC-Anywhere mobile app is available for use on mobile devices with Apple or Android operating systems. Once you've completed the steps above you can sign into the OTC-Anywhere mobile app using either your smartphone or tablet to place an order, search for products, manage your account, and more. Our OTC-Anywhere mobile app is fast, easy, and safe.

If you need help finding, downloading, signing in, or registering on our OTC-Anywhere mobile app, please call an OTC advocate Monday through Friday from 8 a.m. to 11 p.m., ET at 1-855-243-1180 (TTY: 711). Our friendly and helpful OTC advocates will be happy to help you.

| Item # | Product Name | Packaging | Strength | Price |
|-------------------------------------|--|------------|----------------|---------|
| ALLERGY | | | | |
| 1090 | Cetirizine HCL (Allergy Tablets) | 14 ct | 10 mg | \$7.75 |
| 2003 | Cetirizine HCL (Allergy Tablets) | 45 ct | 10 mg | \$12.00 |
| 1008 | Chlorpheniramine Maleate Antihistamine (Allergy Tablets) | 100 ct | 4 mg | \$8.75 |
| 2300 | Claritin 24hr Tablet 10mg | 10 ct | 10 mg | \$22.00 |
| 1009 | Diphenhydramine Antihistamine (Allergy Tablets) | 24 ct | 25 mg | \$5.50 |
| 1308 | Diphenhydramine Antihistamine (Allergy Tablets) | 100 ct | 25 mg | \$8.75 |
| 2021 | Diphenhydramine Antihistamine (Allergy Tablets) | 400 ct | 25 mg | \$16.50 |
| 1428 | Diphenhydramine HCL (Children's Allergy Liquid) | 4 oz | 12.5 mg / 5 ml | \$6.50 |
| 1804 | Fexofenadine (Allergy Tablets) | 30 ct | 180 mg | \$17.50 |
| 1946 | Fluticasone Propionate (Allergy Nasal Spray, 24-hour) | 144 sprays | 50 mcg | \$26.25 |
| 2033 | Loratadine (Allergy Tablets) | 10 ct | 10 mg | \$6.00 |
| 1611 | Loratadine (Allergy Tablets) | 100 ct | 10 mg | \$17.50 |
| 2020 | Loratadine (Allergy Tablets) | 365 ct | 10 mg | \$27.50 |
| 1881 | Nasacort | 60 sprays | | \$26.25 |
| 1922 | Nasal Decongestant Inhaler - Levmetamfetamine | 0.007 oz | 50 mg | \$8.75 |
| 1091 | Nasal Decongestant Spray, 12-Hour | 1 oz | 0.05% | \$6.50 |
| 1052 | Nasal Spray, Saline | 1.5 oz | 0.65% | \$6.00 |
| 2303 | Zyrtec Tablet (14 ct) | 14 ct | 10 mg | \$26.25 |
| 2302 | Zyrtec Tablet (90 ct) | 90 ct | 10 mg | \$53.50 |
| ANTACIDS & ACID REDUCERS | | | | |
| 1313 | Alka-Seltzer | 36 ct | | \$12.00 |
| 1006 | Antacid / Anti-Gas Liquid | 12 oz | | \$7.75 |
| 1346 | Antacid Chewable | 150 ct | 500 mg | \$7.75 |
| 1314 | Effervescent Antacid & Pain Relief | 36 ct | | \$7.75 |
| 1949 | Esomeprazole Magnesium (Acid Reducer, Delayed Release) * | 42 ct | 20 mg | \$26.25 |
| 1108 | Famotidine (Acid Reducer) | 30 ct | 10 mg | \$8.25 |
| 1970 | Omeprazole (Acid Reducer, Delayed Release)* | 42 ct | 20 mg | \$28.50 |

| Item # | Product Name | Packaging | Strength | Price |
|---|---|-----------|-----------------|---------|
| 1966 | Omeprazole (Acid Reducer, Delayed Release, Dissolvable)* | 42 ct | 20 mg | \$28.50 |
| 1800 | Simethicone (Gas Relief) | 100 ct | 80 mg | \$8.75 |
| ANTICANDIDAL (YEAST) | | | | |
| 1115 | Clotrimazole (Vaginal Antifungal 7-Day Cream with Applicator) | 45 gm | 1% | \$11.00 |
| 1117 | Miconazole (Vaginal Antifungal 3-Day Cream with Applicator) | 1 kit | 2% | \$17.50 |
| 1119 | Tioconazole (Vaginal Antifungal 1-Day Cream with Applicator) | 1 ct | 6.5% | \$20.75 |
| ANTI-DIARRHEAL, LAXATIVES & DIGESTIVE HEALTH | | | | |
| 1316 | Beano | 30 ct | | \$9.75 |
| 1128 | Bisacodyl (Stimulant Laxative, Enteric Coated) | 100 ct | 5 mg | \$7.00 |
| 2226 | Bulk-Forming Laxative Caplets 90 ct | 90 ct | | \$15.25 |
| 1969 | ClearLax Unflavored Powder Laxative | 8.3 oz | 17 g | \$14.25 |
| 1126 | Docusate Sodium (Stool Softener) | 100 ct | 100 mg | \$8.75 |
| 1130 | Docusate Sodium plus Sennosides (Natural Vegetable Laxative) | 60 ct | 8.6 mg / 50 mg | \$7.75 |
| 1733 | Enema | 4.5 oz | | \$6.00 |
| 1124 | Ex-Lax | 8 ct | 15 mg | \$8.75 |
| 1155 | Fiber Tablets ‡ | 60 ct | 500 mg | \$11.00 |
| 1125 | Glycerin Suppository Laxative | 25 ct | 2 gm | \$7.75 |
| 2387 | Hydralyte Electrolyte Rapid Rehydration Orange Powder Stick Pouch | 20 ct | | \$25.00 |
| 1067 | Lactase Capsules | 60 ct | 3,000 FCC Units | \$11.00 |
| 1133 | Loperamide HCL (Anti-Diarrheal Tablets)* | 12 ct | 2 mg | \$6.50 |
| 1889 | Magnesium Citrate (Saline Laxative, Lemon) | 10 oz | | \$6.50 |
| 1011 | Milk of Magnesia | 12 oz | 1,200 mg | \$7.00 |
| 2213 | Oral Probiotic | 50 ea | 250 mg | \$27.50 |
| 1317 | Pepto-Bismol Cherry | 12 oz | 525 mg / 30 ml | \$12.00 |
| 1045 | Pink Bismuth Chewable Tablets | 30 ct | 262 mg | \$8.25 |
| 1318 | Pink Bismuth Liquid | 8 oz | 525 mg / 30 ml | \$7.75 |
| 2227 | PV Fiber Therapy Original Coarse Unflavored 72 tsp | 19 oz | | \$13.75 |

| Item # | Product Name | Packaging | Strength | Price |
|--|--|-----------|----------|----------|
| ANTI-FUNGAL | | | | |
| 1047 | Clotrimazole (Athlete's Foot Cream) | 1.5 oz | 1% | \$10.50 |
| 1135 | Miconazole Nitrate (Anti-fungal Cream) | 1 oz | 2% | \$9.75 |
| 1874 | Miconazole Nitrate (Athlete's Foot Spray) | 4.6 oz | 2% | \$11.50 |
| 2305 | Nail Restore Fungal Formula | 0.34 oz | | \$19.00 |
| 1046 | Terbinafine HCL (Athlete's Foot Cream) | 0.5 oz | 1% | \$12.50 |
| 1064 | Tolnaftate (Anti-fungal Cream) | 1.25 oz | 1% | \$7.75 |
| BATHROOM SAFETY & FALL PREVENTION | | | | |
| 1764 | Adjustable Transfer Bench | 1 ct | | \$84.50 |
| 2306 | Antimicrobial Suction Cup Grab Bar, Chrome, 12in | 1 ea | | \$20.75 |
| 2307 | Antimicrobial Suction Cup Grab Bar, Chrome, 16in | 1 ea | | \$25.50 |
| 1728 | Bath Bench with Back | 1 ct | | \$60.25 |
| 1727 | Bath Bench without Back | 1 ct | | \$49.25 |
| 1459 | Bath Mat, Non-Skid | 1 ct | | \$16.50 |
| 1730 | Bath Tub Safety Rail | 1 ct | | \$41.50 |
| 2009 | Bed Assist Bar | 1 ct | | \$60.25 |
| 1464 | Bed Rails | 1 ct | | \$63.75 |
| 2310 | Bath Seat Cushion | 1 ea | | \$23.75 |
| 1984 | Bedside Commode* | 1 ct | | \$70.25 |
| 2309 | Chair Shower Transport | 1 ea | | \$109.00 |
| 2006 | Fall Mat | 1 ct | | \$157.50 |
| 1790 | Gait Belt - 60" | 1 ct | | \$17.50 |
| 1791 | Gait Belt - 72" | 1 ct | | \$18.50 |
| 2007 | Handheld Shower Head | 1 ct | | \$27.50 |
| 1798 | Knurled Chrome Grab Bar - 12" | 1 ct | | \$20.75 |
| 1797 | Knurled Chrome Grab Bar - 24" | 1 ct | | \$24.00 |
| 2005 | Knurled Chrome Grab Bar - 32" | 1 ct | | \$39.50 |
| 1983 | Nightlight | 2 ct | | \$16.50 |
| 1729 | Raised Toilet Seat | 1 ct | | \$38.25 |
| 1950 | Raised Toilet Seat with Arms | 1 ct | | \$70.50 |
| 1780 | Safety Treads, Tub & Stair | 1 pack | | \$9.75 |
| 1460 | Shower Mat, Non-Skid | 1 ct | | \$19.25 |

| Item # | Product Name | Packaging | Strength | Price |
|---|---|-----------|-----------------------|---------|
| 1779 | Toilet Safety Rails | 1 set | | \$43.75 |
| 2308 | Toilet Seat Cushion Vinyl | 1 ea | | \$15.75 |
| 2008 | Treaded Slipper Socks, One Size Fits Most | 1 pair | | \$7.75 |
| COLD & FLU | | | | |
| 1360 | Cepacol Sore Throat Lozenges | 16 ct | 7.5%, 5 mg | \$8.75 |
| 1166 | Cough & Cold for High Blood Pressure | 16 ct | 4 mg / 30 mg | \$7.75 |
| 1056 | Cough Drops, Cherry | 30 ct | 5.8 mg | \$3.25 |
| 1833 | Cough Drops, Honey Lemon | 30 ct | 7.5 mg | \$3.25 |
| 1834 | Cough Drops, Menthol | 30 ct | 5.4 mg | \$3.25 |
| 1182 | Cough Drops, Sugar Free, Cherry | 25 ct | 5.8 mg | \$4.50 |
| 1054 | Cough Syrup, Expectorant | 4 oz | 200 mg / 10 ml | \$6.50 |
| 1323 | Diabetic Tussin DM | 4 oz | 20 mg / 200 mg | \$9.75 |
| 1180 | Guaifenesin (Cough Expectorant) | 100 ct | 200 mg | \$11.00 |
| 1178 | Mucus Relief DM Expectorant & Cough Suppressant (Guaifenesin 400 mg / Dextromethorphan HBr 20 mg) | 30 ct | 400 mg / 20 mg | \$13.25 |
| 1965 | Mucus Relief DM Expectorant & Cough Suppressant, Extended Release | 14 ct | 1,200 mg / 60 mg | \$16.50 |
| 1357 | Multi-Symptom Cold Formula | 24 ct | 10 mg / 5 mg / 325 mg | \$8.75 |
| 1931 | Nasal Rinse Kit, Saline | 1 kit | | \$19.75 |
| 1792 | Personal Steam Inhaler | 1 ct | | \$54.75 |
| 1352 | Phenylephrine HCL (Nasal Decongestant PE) | 36 ct | 10 mg | \$7.75 |
| 1176 | Sore Throat Lozenges, Cherry | 18 ct | | \$5.50 |
| 1904 | Sore Throat Spray, Cherry | 6 oz | 1.4% | \$7.75 |
| 1164 | Vapor Rub | 4 oz | 4.8% / 1.2% | \$7.75 |
| COLD SORE & MEDICATED LIP PRODUCTS | | | | |
| 1152 | Abreva | 2 gm | 10% | \$26.25 |
| 1256 | Blistex Lip Ointment | 6 gm | | \$5.50 |
| 1153 | Herpecin-L Lip Balm | 0.1 oz | 1% | \$9.75 |
| 1359 | Releev Cold Sore Treatment | 6 ml | 0.13% | \$24.75 |
| DENTAL & DENTURE CARE | | | | |
| 2312 | Antiseptic Rinse | 250 ml | | \$5.00 |
| 1817 | Biotene Dry Mouth Oral Rinse | 16 oz | | \$14.25 |

| Item # | Product Name | Packaging | Strength | Price |
|--------|---|-----------|----------|---------|
| 1818 | Biotene Dry Mouth Spray | 1.5 oz | | \$12.50 |
| 1749 | Dental Travel Kit | 1 ct | | \$11.00 |
| 1747 | Denture Brush | 1 ct | | \$6.50 |
| 1032 | Denture Cleaning Tablets | 40 ct | | \$7.75 |
| 1653 | Efferdent Plus Mint Tablets | 44 ct | | \$9.75 |
| 1842 | Effergrip Denture Cream Adhesive | 1.5 oz | | \$7.75 |
| 1843 | Effergrip Denture Cream Adhesive | 2.5 oz | | \$9.75 |
| 1745 | Fingertip Tooth & Gum Massager | 1 ct | | \$9.75 |
| 1187 | Fixodent | 0.75 oz | | \$7.00 |
| 1751 | Interdental Flossups | 90 ct | | \$6.00 |
| 1748 | Interdental Gum Brushes | 10 ct | | \$6.50 |
| 2311 | Listerine Original | 1 L | | \$10.25 |
| 1454 | Orajel Pain Relief | 0.25 oz | 20% | \$12.00 |
| 1750 | Oral Care System Kit | 1 ct | | \$13.75 |
| 1286 | Oral Pain Relief | 0.5 oz | 20% | \$7.75 |
| 1324 | Polident Denture Cream | 3.9 oz | | \$9.75 |
| 1892 | Polident Overnight | 84 ct | | \$13.25 |
| 1901 | Reach Waxed Dental Floss - Cinnamon | 55 yd | | \$4.50 |
| 1455 | Reach Waxed Dental Floss - Mint | 55 yd | | \$5.50 |
| 1902 | Reach Waxed Dental Floss - Unflavored | 55 yd | | \$4.50 |
| 1746 | Tongue Cleaner | 1 ct | | \$6.50 |
| 2015 | Toothbrush, Battery Powered | 1 ct | | \$22.00 |
| 1830 | Toothbrush, Colgate, Adult Medium | 1 ct | | \$3.25 |
| 1413 | Toothbrush, Colgate, Adult Soft | 1 ct | | \$3.25 |
| 1450 | Toothbrush, Rechargeable | 1 ct | | \$40.50 |
| 1948 | Toothbrush, Soft 2-pack | 2 ct | | \$6.50 |
| 1412 | Toothbrush, Tek Pro, Angled Soft | 1 ct | | \$3.25 |
| 1831 | Toothpaste, Colgate | 4 oz | | \$6.50 |
| 1838 | Toothpaste, Crest Sensi-Relief | 4.1 oz | | \$9.75 |
| 1914 | Toothpaste, Fluoride | 6.4 oz | | \$6.50 |
| 1414 | Toothpaste, Pepsodent | 5.5 oz | | \$5.50 |
| 1903 | Toothpaste, Sensitive Teeth | 4.3 oz | | \$7.75 |
| 1716 | Toothpaste, Ultrabrite Advanced Whitening | 6 oz | | \$7.00 |
| 1744 | Water Jet | 1 ct | | \$49.25 |

| Item # | Product Name | Packaging | Strength | Price |
|----------------------|---|-----------|----------|----------|
| 1743 | Water Jet Replacement Tips | 5 ct | | \$18.50 |
| DIABETES CARE | | | | |
| 1839 | Diabetic Skin Relief Foot Cream | 3.4 oz | | \$13.25 |
| 1956 | Diabetic Socks, Black, Medium 3-pack | 3 pair | | \$9.75 |
| 1957 | Diabetic Socks, Black, Large 3-pack | 3 pair | | \$9.75 |
| 1958 | Diabetic Socks, Black, X-Large 3-pack | 3 pair | | \$9.75 |
| 1953 | Diabetic Socks, White, Medium 3-pack | 3 pair | | \$9.75 |
| 1954 | Diabetic Socks, White, Large 3-pack | 3 pair | | \$9.75 |
| 1955 | Diabetic Socks, White, X-Large 3-pack | 3 pair | | \$9.75 |
| 2315 | Glucose Gummies Mixed Fruit Flavor | 60 ct | | \$10.00 |
| 1997 | Glucose Tablets | 50 ct | | \$11.00 |
| 1959 | Ultra Soft Padded Diabetic Sock, Black, Medium 2-pack | 2 pair | | \$12.00 |
| 1960 | Ultra Soft Padded Diabetic Sock, Black, Large 2-pack | 2 pair | | \$12.00 |
| 1961 | Ultra Soft Padded Diabetic Sock, Black, X-Large 2-pack | 2 pair | | \$12.00 |
| 1962 | Ultra Soft Padded Diabetic Sock, White, Medium 2-pack | 2 pair | | \$12.00 |
| 1963 | Ultra Soft Padded Diabetic Sock, White, Large 2-pack | 2 pair | | \$12.00 |
| 1964 | Ultra Soft Padded Diabetic Sock, White, X-Large 2-pack | 2 pair | | \$12.00 |
| 2314 | Vivi Cap Insulin Temperature Shield | 1 ea | | \$126.00 |
| 2320 | Zero Sugar Biotin† | 60 ct | 5000 mcg | \$14.00 |
| 2316 | Zero Sugar Diabetic Multivitamin† | 60 ct | | \$14.00 |
| 2317 | Zero Sugar Probiotic | 60 ct | | \$14.00 |
| 2318 | Zero Sugar Vitamin C† | 60 ct | | \$14.00 |
| 2319 | Zero Sugar Vitamin D† | 60 ct | 125 mcg | \$14.00 |
| DIAGNOSTICS | | | | |
| 1982 | Activity Tracker | 1 ct | | \$57.00 |
| 1935 | Bathroom Scale ‡ | 1 ct | | \$43.75 |
| 1981 | Bathroom Scale, Talking ‡ | 1 ct | | \$65.75 |
| 1253 | Blood Pressure Monitor, Desktop Automatic ‡ | 1 ct | | \$43.75 |
| 1503 | Blood Pressure Monitor, Desktop Talking ‡ | 1 ct | | \$54.75 |

| Item # | Product Name | Packaging | Strength | Price |
|---------------------------|---|-----------|----------|----------|
| 1501 | Blood Pressure Monitor, Wrist ‡ | 1 ct | | \$32.75 |
| 1502 | Blood Pressure Monitor, Wrist Talking ‡ | 1 ct | | \$38.25 |
| 2163 | Covid-19 At Home Test Kit‡ | 2 ct | | \$31.75 |
| 1416 | EZ Detect Colon Cancer Test Kit ‡ | 1 ct | | \$18.50 |
| 1794 | Fever Strip Thermometer | 1 ct | | \$8.75 |
| 1505 | Finger Pulse Oximeter ‡ | 1 ct | | \$43.75 |
| 1771 | Heart Rate Monitor Watch ‡ | 1 ct | | \$43.75 |
| 1789 | Peak Flow Meter ‡ | 1 ct | | \$18.50 |
| 1752 | Thermometer Probe Covers | 30 ct | | \$3.75 |
| 1063 | Thermometer, Digital 60 seconds | 1 ct | | \$8.75 |
| 1285 | Thermometer, Digital Ear | 1 ct | | \$32.75 |
| 1697 | Thermometer, Flexible Tip, Digital 9 seconds | 1 ct | | \$14.25 |
| 1925 | Thermometer, Talking Ear and Forehead | 1 ct | | \$53.75 |
| 2323 | Vivi Epi Pen Temperature Shield | 1 ea | | \$136.50 |
| EYE & EAR CARE | | | | |
| 1192 | Artificial Tears Drops | 0.5 oz | | \$6.50 |
| 1194 | Artificial Tears Ointment | 3.5 gm | | \$11.00 |
| 1199 | Clear Eyes Eye Drops | 0.2 oz | | \$6.50 |
| 1742 | Cotton Tipped Swabs | 300 ct | | \$6.00 |
| 1841 | Ear Pain Relief Ear Drops | 10 ml | | \$14.25 |
| 1190 | Ear Wax Removal Drops | 15 ml | 6.5% | \$7.75 |
| 1363 | Ear Wax Removal System with Rubber Bulb | 15 ml | 6.5% | \$9.75 |
| 1516 | Eye Patches | 1 ea | | \$9.75 |
| 1806 | Irritation Relief Eye Drops | 15 ml | | \$10.50 |
| 1468 | Multi-Purpose Contact Lens Solution | 12 oz | | \$8.75 |
| 2324 | Preservision AREDS 2 Vitamin & Mineral Supplement | 90 ct | | \$35.00 |
| 1061 | Redness Relief Eye Drops | 15 ml | 0.05% | \$5.50 |
| 1905 | Stye Eye Compress | 1 ct | | \$12.00 |
| 1906 | Stye Eye Ointment | 3.5 gm | | \$12.50 |
| 1910 | Swim-Ear Ear Drops | 1 oz | | \$8.25 |

| Item # | Product Name | Packaging | Strength | Price |
|------------------|--|-----------|------------|---------|
| FIRST AID | | | | |
| 2330 | A & D Ointment | 144 ct | | \$17.00 |
| 1344 | Adhesive Bandages | 100 ct | | \$6.50 |
| 1803 | After Bite Relief | 0.5 oz | | \$11.00 |
| 1808 | Antiseptic Skin Cleanser | 8 oz | | \$12.00 |
| 1201 | Antiseptic Towelettes | 100 ct | | \$8.25 |
| 1020 | Bacitracin Ointment | 1 oz | 500 u / gm | \$7.00 |
| 2331 | Bacitracin Ointment | 144 ct | | \$20.00 |
| 1142 | Bactine Solution | 4 oz | | \$11.00 |
| 1676 | Band-Aid Johnson & Johnson Gauze Pad - 2" x 2" | 25 ct | | \$6.50 |
| 1926 | Burn Relief Spray | 4.5 oz | 0.5% | \$12.00 |
| 1144 | Caldyphen Clear (Anti-Itch Lotion) | 6 oz | 1% | \$8.75 |
| 1223 | Conforming Stretch Gauze Sterile Bandages - 3" x 4.1 yd | 12 ct | | \$8.75 |
| 1763 | Cotton Balls | 300 ct | | \$5.00 |
| 1669 | Cotton Tipped Applicator - 6" | 1000 ct | | \$12.50 |
| 1140 | Diphenhydramine HCL / Zinc Acetate (Anti-Itch Cream) | 1 oz | | \$6.50 |
| 1207 | Elastic Bandage - 2" x 4.5 yd | 1 ct | | \$6.50 |
| 1213 | Elastic Bandage - 6" x 5 yd | 1 ct | | \$8.75 |
| 1947 | First Aid Kit, 20 Pieces | 1 ct | | \$6.50 |
| 1215 | First Aid Kit, 76 Pieces | 1 ct | | \$11.00 |
| 1738 | First Aid Kit, 175 Pieces | 1 ct | | \$16.50 |
| 1062 | Hot/Cold Pack, 1 small & 1 large | 1 ct | | \$9.75 |
| 1074 | Hydrocortisone 1% Cream | 1 oz | 1% | \$6.50 |
| 1228 | Hydrogen Peroxide | 16 oz | 3% | \$5.50 |
| 1867 | Insect Repellent Spray - DEET | 2 oz | 30% | \$9.25 |
| 1796 | Insect Repellent Spray - DEET | 4 oz | 30% | \$13.25 |
| 1868 | Insect Repellent Spray - DEET | 8 oz | 30% | \$18.00 |
| 1203 | Iodine Solution Antiseptic | 4 oz | 10% | \$8.25 |
| 1713 | Isopropyl Alcohol | 16 oz | 70% | \$6.50 |
| 1229 | Isopropyl Alcohol, Wintergreen | 16 oz | 70% | \$5.50 |
| 1872 | Liquid Bandage | 0.61 oz | | \$11.00 |
| 1326 | Neosporin + Pain Relief | 0.5 oz | | \$11.00 |

| Item # | Product Name | Packaging | Strength | Price |
|------------------|---|-----------|----------|---------|
| 2208 | Nexcare Absolute Waterproof First Aid Tape -1" x 5 yd | 1 ct | | \$8.75 |
| 1667 | Nexcare clear waterproof bandages assorted sizes 50ct | 50 ct | | \$7.75 |
| 2204 | Nexcare DUO Bandages Assorted, 40ct | 40 ct | | \$11.00 |
| 2328 | Nitrile Gloves (Small) | 100 ea | | \$22.00 |
| 1840 | Nitrile Gloves (Large) | 100 ea | | \$22.00 |
| 2329 | Nitrile Gloves (XL) | 100 ea | | \$22.00 |
| 2018 | Petroleum Jelly | 4 oz | | \$7.75 |
| 2215 | Petroleum Jelly Skin Protectant with Cocoa Butter 7.5oz | 7.5 oz | | \$12.00 |
| 1896 | Procedural Face Masks with Earloops | 50 ct | | \$19.75 |
| 1217 | Tape, Paper Surgical - 1" x 10 yd | 1 ct | | \$6.50 |
| 1219 | Tape, Silk Surgical - 1" x 10 yd | 1 ct | | \$6.00 |
| 1221 | Tape, Transparent Surgical - 1" x 10 yd | 1 ct | | \$6.00 |
| 1819 | Tegaderm Transparent Dressing | 8 ct | | \$11.00 |
| 1014 | Triple Antibiotic Ointment | 1 oz | | \$8.75 |
| 2332 | Triple Antibiotic Ointment | 144 ct | | \$25.00 |
| 2333 | Vinyl Gloves (Small) | 100 ct | | \$17.50 |
| 2230 | Vinyl Gloves (Large) | 100 ct | | \$17.50 |
| 2334 | Vinyl Gloves (XL) | 100 ct | | \$17.50 |
| FOOT CARE | | | | |
| 1784 | Bunion Guard | 1 ct | | \$10.50 |
| 1238 | Callus Remover Pads | 6 ct | | \$8.75 |
| 1236 | Corn Remover Pads | 9 ct | | \$8.25 |
| 2335 | Deodorant Foot Powder | 6 oz | | \$9.00 |
| 2388 | Dr. Scholl's Float-On-Air Insole Men's | 1 ea | | \$19.75 |
| 2389 | Dr. Scholl's Float-On-Air Insole Women's | 1 ea | | \$19.75 |
| 1785 | Hammer Toe Crest | 1 ct | | \$11.00 |
| 2391 | Kerasal Fungal Nail Renewal | 0.33 oz | | \$24.00 |
| 2390 | Kerasal Intensive Foot Repair Ointment | 0.33 oz | | \$18.75 |
| 1786 | Lamb's Wool Padding | 1 ct | | \$7.75 |
| 1240 | Medicated Foot Powder | 5 oz | | \$8.25 |
| 1782 | Moleskin Sheets Plus | 4 ct | | \$7.75 |
| 1788 | Toe Protector, Small | 1 ct | | \$9.75 |

| Item # | Product Name | Packaging | Strength | Price |
|----------------------------------|--|-----------|----------|----------|
| 1787 | Toe Protector, Large | 1 ct | | \$9.75 |
| 1783 | Toe Separator | 6 ct | | \$8.75 |
| HEMORRHOIDAL PREPARATIONS | | | | |
| 1066 | Hemorrhoidal Ointment | 2 oz | | \$9.75 |
| 1247 | Hemorrhoidal Suppository | 12 ct | | \$7.75 |
| 1364 | Pre-moist Hemorrhoid Pads | 100 ct | | \$9.75 |
| 1248 | Preparation H Cream | 26 gm | | \$13.25 |
| 1895 | Preparation H Medicated Wipes | 48 ct | | \$12.00 |
| HOME AIDS | | | | |
| 2351 | Air Purifier | 1 ea | | \$189.00 |
| 2336 | Aluminum Reacher with Magnetic Tip Non-Folding 32" | 1 ea | | \$8.75 |
| 2341 | Cordless Water Flosser | 1 ea | | \$31.50 |
| 1836 | CPAP Pillow Fiber Filled | 1 ct | | \$65.75 |
| 1732 | Cushion, Foam Ring | 1 ct | | \$24.00 |
| 1731 | Cushion, Lumbar | 1 ct | | \$22.00 |
| 2340 | Deluxe Pedal Exerciser | 1 ea | | \$59.75 |
| 1753 | Elastic Mattress Cover - 80" x 36" x 6" | 1 ct | | \$8.25 |
| 2346 | Exercise Resistance Bands | 1 ea | | \$5.25 |
| 2353 | Foam Bed Wedge | 1 ea | | \$43.50 |
| 2349 | Foot Stool with Support Handle | 1 ea | | \$27.25 |
| 2347 | Hand Exercise Strengtheners | 1 ea | | \$7.50 |
| 1431 | Hearing Aid Batteries (Size 10) | 8 ct | | \$8.75 |
| 1430 | Hearing Aid Batteries (Size 13) | 8 ct | | \$8.75 |
| 1429 | Hearing Aid Batteries (Size 312) | 8 ct | | \$8.75 |
| 1795 | Humidifier, Ultra-Sonic Cool Mist | 1 ct | | \$65.75 |
| 1936 | Hypoallergenic Pillow | 1 ct | | \$54.75 |
| 2343 | Jar Opener for Seniors | 3 ct | | \$7.25 |
| 1756 | Kitchen Scale, Dial ‡ | 1 ct | | \$8.25 |
| 2016 | Kitchen Scale, Digital ‡ | 1 ct | | \$27.50 |
| 2354 | Massaging Foam Roller | 1 ea | | \$132.25 |
| 2214 | Measuring Cup Scale ‡ | 1 ea | | \$29.50 |
| 1875 | Medical ID Bracelet - Blank | 1 ct | | \$18.50 |
| 1877 | Medical ID Bracelet - Diabetic | 1 ct | | \$18.50 |

| Item # | Product Name | Packaging | Strength | Price |
|--------|---------------------------------------|-----------|----------|---------|
| 1876 | Medical ID Bracelet - Heart | 1 ct | | \$18.50 |
| 2017 | Medicine Bottle Opener with Magnifier | 1 ct | | \$11.00 |
| 2352 | Ortho Wedge | 1 ea | | \$47.25 |
| 1933 | Pill Crusher with Storage | 1 ct | | \$12.00 |
| 1932 | Pill Cutter with Safety Shield | 1 ct | | \$10.50 |
| 2337 | Reacher Suction Cup 22" | 1 ea | | \$12.50 |
| 2338 | Reacher Suction Cup 33" | 1 ea | | \$15.25 |
| 1799 | Sharps Container, 1 gallon | 1 ct | | \$8.25 |
| 2339 | Shoe Horn No Bend 24" | 1 ea | | \$11.00 |
| 2344 | Stress Ball | 1 ea | | \$7.25 |
| 2350 | Tray Walker Fold Away | 1 ea | | \$17.50 |
| 1934 | Weekly AM/PM Pill Case | 1 ct | | \$11.00 |
| 1466 | Wheelchair Cushion, Gel / Foam Seat | 1 ct | | \$32.75 |
| 2348 | Wrist and Ankle Weights | 1 ea | | \$26.25 |

INCONTINENCE SUPPLIES

| | | | | |
|------|---|-------|--|---------|
| 1300 | A & D Ointment | 2 oz | | \$7.75 |
| 1510 | Adult Briefs, Small - 25" - 34" (Tabs) | 24 ct | | \$20.75 |
| 2026 | Adult Briefs, Medium - 32" to 44" (Tabs) | 24 ct | | \$20.75 |
| 2027 | Adult Briefs, Large - 44" to 58" (Tabs) | 24 ct | | \$22.00 |
| 2028 | Adult Briefs, X-Large - 58" to 63" (Tabs) | 20 ct | | \$22.00 |
| 1811 | Attends Discreet Men's Guard | 20 ct | | \$15.25 |
| 1812 | Attends Discreet Women's Maximum Bladder Control Pad | 20 ct | | \$22.00 |
| 1815 | Attends Discreet Women's Panty Liner | 28 ct | | \$9.75 |
| 1814 | Attends Discreet Women's Ultimate Bladder Control Pad | 20 ct | | \$24.00 |
| 1302 | Barrier Cream | 4 oz | | \$9.75 |
| 2010 | Bathing Wipes | 8 ct | | \$10.00 |
| 2048 | Bedpan | 1 ct | | \$6.75 |
| 1479 | Bladder Control Shaped Pad, Heavy Absorbency | 20 ct | | \$18.50 |
| 1480 | Bladder Control Shaped Pad, Maximum Absorbency | 20 ct | | \$18.50 |
| 2381 | Discreet Men's Underwear, Small/Medium | 20 ea | | \$24.50 |
| 2382 | Discreet Men's Underwear, Large/X-Large | 18 ea | | \$24.50 |

| Item # | Product Name | Packaging | Strength | Price |
|------------------------|--|-----------|--------------|---------|
| 2383 | Discreet Women's Underwear, Medium | 20 ea | | \$24.50 |
| 2385 | Discreet Women's Underwear, Large | 18 ea | | \$24.50 |
| 2384 | Discreet Women's Underwear, X-Large | 16 ea | | \$24.50 |
| 1021 | Disposable Underwear, Medium - 34" to 44" (Pull-up) | 20 ct | | \$17.50 |
| 1026 | Disposable Underwear, Large - 44" to 58" (Pull-up) | 18 ct | | \$17.50 |
| 1027 | Disposable Underwear, X-Large - 58" to 68" (Pull-up) | 14 ct | | \$17.50 |
| 1928 | Flushable Wipes | 24 ct | | \$8.75 |
| 2000 | Flushable Wipes | 60 ct | | \$13.25 |
| 1202 | Lantiseptic Skin Protectant Ointment | 4 oz | 50% | \$13.25 |
| 2049 | Male Urinal | 1 ct | | \$6.25 |
| 2380 | Overnight Bladder Control Pads | 30 ea | | \$33.50 |
| 1508 | Oxytrol 4ct | 4 ct | 3.9 mg / day | \$24.00 |
| 1509 | Oxytrol 8ct | 8 ct | 3.9 mg / day | \$43.50 |
| 2022 | Perineal Wash Rinse-Free | 8 oz | | \$7.50 |
| 1993 | Premier Adult Briefs, Medium - 32" to 44" (Tabs) | 14 ct | | \$32.75 |
| 1994 | Premier Adult Briefs, Large - 44" to 58" (Tabs) | 12 ct | | \$32.75 |
| 1995 | Premier Adult Briefs, X-Large - 58" to 63" (Tabs) | 10 ct | | \$32.75 |
| 1990 | Premier Disposable Underwear, Medium - 36" to 44" (Pull-up) | 18 ct | | \$32.75 |
| 1991 | Premier Disposable Underwear, Large - 44" to 58" (Pull-up) | 16 ct | | \$32.75 |
| 1992 | Premier Disposable Underwear, X-Large - 56" to 68" (Pull-up) | 14 ct | | \$32.75 |
| 1477 | Underpad, Disposable - 30" x 30" | 10 ct | | \$11.00 |
| 1996 | Underpad, Extra Absorbent Air Permeable, 30" x 36" | 5 ct | | \$16.50 |
| 1348 | Washcloth with Lanolin | 64 ct | | \$9.25 |
| MOTION SICKNESS | | | | |
| 1264 | Bonine Adult 8's | 8 ct | 25 mg | \$8.75 |
| 1263 | Dimenhydrinate (Motion Sickness Tablets) | 12 ct | 50 mg | \$7.75 |
| 1366 | Meclizine HCL (Motion Sickness Caplets) | 100 ct | 12.5 mg | \$9.75 |

| Item # | Product Name | Packaging | Strength | Price |
|--|--|-----------|----------|---------|
| NUTRITIONAL SUPPLEMENTS | | | | |
| 2104 | Glucerna: Chocolate Shake 8oz each | 6 ea | | \$19.75 |
| 2105 | Glucerna: Vanilla Shake 8oz each | 6 ea | | \$19.75 |
| PAIN RELIEF AIDS | | | | |
| 1809 | Arthritis Hot Pain Relief Cream | 3 oz | 10% | \$7.75 |
| 2229 | Arthritis Pain Relieving Gel 3.5oz | 3.5 oz | 1% | \$18.50 |
| 1924 | Aspercreme | 1.25 oz | | \$9.75 |
| 1944 | Cold/Hot Menthol Medicated Patch | 5 ct | 5% | \$11.00 |
| 2355 | Diclofenac Sodium Topical Gel | 3.5 oz | 1% | \$15.00 |
| 1845 | Epsom Salt | 4 lb | | \$8.50 |
| 1846 | Fast Freeze Pain Relief Spray | 4 oz | | \$14.75 |
| 1859 | HeatWraps - Back & Hip | 2 ct | | \$12.00 |
| 1860 | HeatWraps - Neck, Shoulder, & Wrist | 3 ct | | \$12.00 |
| 1761 | Ice Bag - 9" | 1 ct | | \$9.75 |
| 1871 | Lidocaine Patch | 5 ct | 4% | \$15.25 |
| 1923 | Menthol Gel | 8 oz | 2% | \$9.75 |
| 1762 | Pain Relief Mask | 1 ct | | \$9.75 |
| 1475 | Pain Relieving Muscle Rub | 2 oz | 2.5% | \$6.50 |
| 2386 | Salonpas Lidocaine Gel Patch | 6 ct | | \$17.50 |
| 1739 | Salonpas Pain Relief Patches | 6 ct | | \$15.25 |
| 1781 | Warm or Cold Water Bottle, Rubber Latex | 1 ct | | \$11.00 |
| PAIN RELIEVERS & FEVER REDUCERS | | | | |
| 1423 | Acetaminophen (Children's Pain Relief Chewable) | 30 ct | 80 mg | \$7.00 |
| 2030 | Acetaminophen (Pain Reliever, Extra Strength) | 24 ct | 500 mg | \$4.50 |
| 1105 | Acetaminophen (Pain Reliever, Extra Strength) | 50 ct | 500 mg | \$6.25 |
| 1600 | Acetaminophen (Pain Reliever, Extra Strength) | 100 ct | 500 mg | \$7.75 |
| 2002 | Acetaminophen (Pain Reliever, Extra Strength) | 500 ct | 500 mg | \$16.50 |
| 1001 | Acetaminophen (Pain Reliever, Regular Strength) | 100 ct | 325 mg | \$6.50 |
| 1311 | Arthritis Pain Reliever | 100 ct | 650 mg | \$13.25 |

| Item # | Product Name | Packaging | Strength | Price |
|--------------------------------------|--|-----------|----------------------------|---------|
| 1095 | Aspirin | 100 ct | 325 mg | \$6.00 |
| 1096 | Aspirin, Enteric Coated | 100 ct | 325 mg | \$6.50 |
| 1002 | Aspirin, Enteric Coated, Low Dose | 120 ct | 81 mg | \$6.50 |
| 1998 | Aspirin, Enteric Coated, Low Dose | 500 ct | 81 mg | \$13.25 |
| 1802 | Aspirin, Low Dose, Chewable | 36 ct | 81 mg | \$6.00 |
| 1720 | Bayer Back & Body Pain, Extra Strength | 24 ct | 500 mg / 32.5 mg | \$7.75 |
| 1367 | Capsaicin (Pain Relief Cream) | 2.1 oz | 0.025% | \$10.50 |
| 2031 | Ibuprofen (Pain Reliever / Fever Reducer) | 24 ct | 200 mg | \$4.50 |
| 1004 | Ibuprofen (Pain Reliever / Fever Reducer) | 100 ct | 200 mg | \$8.75 |
| 2001 | Ibuprofen (Pain Reliever / Fever Reducer) | 500 ct | 200 mg | \$17.50 |
| 2032 | Naproxen Sodium (Pain Reliever / Fever Reducer) | 24 ct | 220 mg | \$5.50 |
| 1041 | Naproxen Sodium (Pain Reliever / Fever Reducer) | 50 ct | 220 mg | \$7.75 |
| 1097 | Naproxen Sodium (Pain Reliever / Fever Reducer) | 100 ct | 220 mg | \$11.00 |
| 1365 | Pain Reliever Plus (Acetaminophen 250mg / Aspirin 250 mg / Caffeine 65 mg) | 100 ct | 250 mg / 250 mg / 65 mg | \$8.75 |
| 1332 | Pain Reliever, PM (Acetaminophen, Extra Strength / Diphenhydramine 25 mg) | 100 ct | 500 mg / 25 mg | \$9.75 |
| PEDICULICIDE (LICE TREATMENT) | | | | |
| 1929 | Lice Elimination Kit | 1 kit | | \$29.50 |
| 1269 | Lice Treatment Rinse (Permethrin) | 59 ml | 1% | \$16.50 |
| 1271 | Lice Treatment Shampoo | 4 oz | | \$11.50 |
| SKIN & SUN CARE | | | | |
| 1076 | Acne Gel 10% Benzoyl Peroxide | 1.5 oz | 10% | \$9.25 |
| 1368 | Ammonium Lactate Moisturizing Lotion | 8 oz | 12% | \$13.25 |
| 2225 | Aquaphor Healing Ointment | 3.5 oz | | \$14.25 |
| 2356 | Aveeno Daily Moisturizing Body Wash | 18 oz | | \$23.00 |
| 1821 | Calamine Skin Protectant Lotion | 6 oz | | \$7.75 |
| 2231 | Gold Bond® Diabetics Dry Skin Relief 13 oz. | 13 oz | | \$13.25 |
| 1065 | Hand Sanitizer | 8 oz | | \$7.00 |
| 2358 | Healing Ointment | 3.75 oz | | \$9.00 |
| 2357 | Hydrocortisone Cream | 144 ct | 1% | \$23.00 |

| Item # | Product Name | Packaging | Strength | Price |
|------------------------------|---|-----------|---------------|---------|
| 1893 | Moisturizing Body Lotion with Aloe | 8 oz | | \$8.25 |
| 1852 | Scar Gel | 0.7 oz | | \$12.00 |
| 1908 | Sunscreen Lotion SPF 30 | 1.5 oz | | \$5.50 |
| 1284 | Sunscreen Lotion SPF 30 | 4 oz | | \$8.25 |
| SLEEP AIDS | | | | |
| 2363 | Melatonin Quick Dissolve Tablet | 90 ct | 10 mg | \$9.00 |
| 1725 | Nasal Strips, Large | 30 ct | | \$14.25 |
| 1724 | Nasal Strips, Medium | 30 ct | | \$14.25 |
| 2361 | Natures Bounty Melatonin Softgel 5mg | 90 ct | 5 mg | \$12.00 |
| 2362 | Sleep Aid | 16 ct | 25 mg | \$8.00 |
| 1276 | Sleep Tablets | 50 ct | 25 mg | \$8.25 |
| SMOKING CESSATION | | | | |
| 1372 | Nicotine Gum ‡ | 50 ct | 4 mg | \$27.50 |
| 1281 | Nicotine Lozenges ‡ | 72 ct | 4 mg | \$46.00 |
| 1369 | Nicotine Patch, Step 1 ‡ | 14 ct | 21 mg / 24 hr | \$40.50 |
| 1370 | Nicotine Patch, Step 2 ‡ | 14 ct | 14 mg / 24 hr | \$40.50 |
| 1371 | Nicotine Patch, Step 3 ‡ | 14 ct | 7 mg / 24 hr | \$40.50 |
| SUPPORTS & BRACES | | | | |
| 1225 | Ankle Support | 2 ct | | \$11.00 |
| 1767 | Arthritis Gloves, Small | 1 pair | | \$29.50 |
| 1766 | Arthritis Gloves, Medium | 1 pair | | \$29.50 |
| 1765 | Arthritis Gloves, Large | 1 pair | | \$29.50 |
| 2011 | Arthritis Knee Sleeve, Small | 1 ct | | \$27.50 |
| 2012 | Arthritis Knee Sleeve, Medium | 1 ct | | \$27.50 |
| 2013 | Arthritis Knee Sleeve, Large | 1 ct | | \$27.50 |
| 2014 | Arthritis Knee Sleeve, X-Large | 1 ct | | \$27.50 |
| 1487 | Back Support Elastic - 24" to 46" | 1 ct | | \$25.25 |
| 1488 | Back Support Elastic with Lumbar | 1 ct | | \$29.50 |
| 1770 | Carpal Tunnel Brace, Small | 1 ct | | \$27.50 |
| 1769 | Carpal Tunnel Brace, Medium | 1 ct | | \$27.50 |
| 1768 | Carpal Tunnel Brace, Large | 1 ct | | \$27.50 |
| 1398 | Compression Knee High Socks, Men's Black, Medium (Shoe Size 8 - 10) ‡ | 1 pair | 15 - 20 mmHg | \$19.75 |

| Item # | Product Name | Packaging | Strength | Price |
|--------|--|-----------|--------------|---------|
| 1399 | Compression Knee High Socks, Men's Black, Large (Shoe Size 10.5 - 12) ‡ | 1 pair | 15 - 20 mmHg | \$19.75 |
| 1400 | Compression Knee High Socks, Men's White, Medium (Shoe Size 8 - 10) ‡ | 1 pair | 15 - 20 mmHg | \$19.75 |
| 1401 | Compression Knee High Socks, Men's White, Large (Shoe Size 10.5 - 12) ‡ | 1 pair | 15 - 20 mmHg | \$19.75 |
| 1406 | Compression Knee High Socks, Women's Beige, Small (Shoe Size 4 - 5) | 1 pair | 8 - 15 mmHg | \$19.75 |
| 1407 | Compression Knee High Socks, Women's Beige, Medium (Shoe Size 5.5 - 7.5) | 1 pair | 8 - 15 mmHg | \$19.75 |
| 1408 | Compression Knee High Socks, Women's Beige, Large (Shoe Size 8 - 10.5) | 1 pair | 8 - 15 mmHg | \$19.75 |
| 1410 | Compression Knee High Socks, Women's Black, Medium (Shoe Size 5.5 - 7.5) | 1 pair | 8 - 15 mmHg | \$19.75 |
| 1409 | Compression Knee High Socks, Women's Black, Small (Shoe Size 4-5) | 1 pair | 8 - 15 mmHg | \$19.75 |
| 1411 | Compression Knee High Socks, Women's Black, Large (Shoe Size 8 - 10.5) | 1 pair | 8 - 15 mmHg | \$19.75 |
| 1760 | Deluxe Criss Cross Back Support, Small - 28" to 32" | 1 ct | | \$26.25 |
| 1759 | Deluxe Criss Cross Back Support, Medium - 33" to 37" | 1 ct | | \$26.25 |
| 1758 | Deluxe Criss Cross Back Support, Large - 38" to 42" | 1 ct | | \$26.25 |
| 1224 | Elbow Support | 1 ct | | \$16.50 |
| 1774 | Heel & Elbow Protector, Small | 1 ct | | \$13.25 |
| 1773 | Heel & Elbow Protector, Medium | 1 ct | | \$13.25 |
| 1772 | Heel & Elbow Protector, Large | 1 ct | | \$13.25 |
| 1775 | Heel & Elbow Protector, X-Large | 1 ct | | \$13.25 |
| 1862 | Hip Protector, Small | 1 ct | | \$49.25 |
| 1863 | Hip Protector, Medium | 1 ct | | \$49.25 |
| 1864 | Hip Protector, Large | 1 ct | | \$49.25 |
| 1865 | Hip Protector, X-Large | 1 ct | | \$49.25 |
| 1465 | Knee Stabilizer | 1 ct | | \$25.25 |
| 1481 | Knee Support, Elastic, Small | 1 ct | | \$12.00 |
| 1482 | Knee Support, Elastic, Medium | 1 ct | | \$12.00 |
| 1483 | Knee Support, Elastic, Large | 1 ct | | \$12.00 |
| 1484 | Knee Support, Elastic, Small with Stays | 1 ct | | \$20.75 |

| Item # | Product Name | Packaging | Strength | Price |
|--------------------------------|--|-----------|-------------------|---------|
| 1485 | Knee Support, Elastic, Medium with Stays | 1 ct | | \$20.75 |
| 1486 | Knee Support, Elastic, Large with Stays | 1 ct | | \$20.75 |
| 1463 | Night Wrist Support | 1 ct | | \$32.75 |
| 1897 | Protective Arm Sleeve - Small | 1 pair | | \$22.00 |
| 1898 | Protective Arm Sleeve - Large | 1 pair | | \$26.50 |
| 1899 | Protective Arm Sleeve - X-Large | 1 pair | | \$29.75 |
| 1457 | Rib Belt - Female (one size fits most) | 1 ct | | \$19.75 |
| 1456 | Rib Belt - Male (one size fits most) | 1 ct | | \$19.75 |
| 1778 | Thumb Brace | 1 ct | | \$19.75 |
| 1918 | Wrist Compression - Small | 1 ct | | \$15.25 |
| 1919 | Wrist Compression - Medium | 1 ct | | \$15.25 |
| 1920 | Wrist Compression - Large | 1 ct | | \$15.25 |
| 1921 | Wrist Compression - X-Large | 1 ct | | \$15.25 |
| 1230 | Wrist Splint | 1 ct | | \$24.00 |
| 1227 | Wrist Support | 1 ct | | \$11.00 |
| VITAMINS & MINERALS | | | | |
| 2233 | Beet Root and Cherry Extract Gummy ‡ | 60 ct | | \$13.25 |
| 1820 | Biotin Gummy ‡ | 60 ct | 2,500 mcg | \$14.25 |
| 1373 | Calcium + Vitamin D3 ‡ | 60 ct | 600 mg / 400 IU | \$7.75 |
| 1823 | Calcium + Vitamin D3 Gummy ‡ | 60 ct | 250 mg / 500 IU | \$14.25 |
| 1291 | Calcium ‡ | 60 ct | 600 mg | \$7.75 |
| 1945 | Calcium Chew, Chocolate ‡ | 60 ct | 500 mg / 1,000 IU | \$11.00 |
| 1420 | Centrum Chewable Adult 50+ ‡ | 60 ct | | \$19.75 |
| 1825 | Chromium Picolinate ‡ | 100 ct | 200 mcg | \$14.25 |
| 1827 | Cod Liver Oil ‡ | 110 ct | | \$9.50 |
| 1828 | Coenzyme Q-10 ‡ | 30 ct | 100 mg | \$15.25 |
| 1829 | Coenzyme Q-10 ‡ | 30 ct | 50 mg | \$13.25 |
| 1393 | Daily Multivitamin ‡ | 100 ct | | \$8.75 |
| 1972 | Daily Multivitamin Gummy ‡ | 120 ct | | \$14.25 |
| 1385 | Daily Multivitamin with Minerals ‡ | 100 ct | | \$9.25 |
| 1737 | DHEA Hormonal Supplement ‡ | 50 ct | 50 mg | \$13.25 |
| 1417 | Ferrous Gluconate (Iron Supplement) ‡ | 110 ct | 27 mg | \$8.75 |
| 1376 | Ferrous Sulfate (Iron Supplement) ‡ | 100 ct | 325 mg | \$8.25 |
| 1741 | Fish Oil, Soft Gels ‡ | 60 ct | 1,000 mg | \$8.75 |

| Item # | Product Name | Packaging | Strength | Price |
|--------|--|-----------|-----------------|---------|
| 1849 | Flaxseed ‡ | 100 ct | 1,000 mg | \$12.00 |
| 1850 | Folic Acid ‡ | 100 ct | 800 mcg | \$7.00 |
| 1114 | Glucosamine (Joint Health Support) ‡ | 60 ct | 500 mg | \$12.00 |
| 1003 | Glucosamine / Chondroitin (Joint Health Support) ‡ | 60 ct | 250 mg / 200 mg | \$13.25 |
| 1975 | Healthy Eyes with Lutein ‡ | 60 ct | | \$9.75 |
| 1866 | Immune Support Chewable ‡ | 50 ct | | \$12.50 |
| 2236 | Iron with Vitamin C Gummy ‡ | 60 ct | | \$13.25 |
| 1869 | Leg Cramps Pain Relief Caplets ‡ | 50 ct | | \$15.25 |
| 1870 | Leg Cramps Pain Relief Caplets ‡ | 100 ct | | \$18.50 |
| 1418 | Magnesium ‡ | 110 ct | 250 mg | \$7.75 |
| 2232 | Magnesium Citrate Gummy ‡ | 90 ct | | \$16.50 |
| 1879 | Melatonin ‡ | 100 ct | 5 mg | \$13.25 |
| 1971 | Melatonin Gummy ‡ | 120 ct | 2.5 mg | \$16.50 |
| 2075 | Natural Beta Carotene ‡ | 100 ct | 25,000 IU | \$13.25 |
| 2091 | Natural Biotin ‡ | 60 ct | 5,000 mcg | \$15.25 |
| 2076 | Natural Cod Liver Oil ‡ | 100 ct | | \$12.00 |
| 2092 | Natural Coenzyme Q-10 ‡ | 45 ct | 100 mg | \$19.75 |
| 2073 | Natural Ferrous Gluconate (Iron Supplement) ‡ | 100 ct | 27 mg | \$12.00 |
| 2093 | Natural Folic Acid ‡ | 100 ct | 800 mcg | \$9.75 |
| 2089 | Natural Magnesium ‡ | 60 ct | 482 mg | \$11.00 |
| 2094 | Natural Melatonin ‡ | 60 ct | 5 mg | \$13.25 |
| 2095 | Natural Niacin, No Flush ‡ | 30 ct | 500 mg | \$13.25 |
| 2074 | Natural Vitamin A ‡ | 100 ct | 10,000 IU | \$11.50 |
| 2080 | Natural Vitamin B-1 ‡ | 100 ct | 100 mg | \$13.25 |
| 2081 | Natural Vitamin B-6 ‡ | 100 ct | 100 mg | \$12.00 |
| 2082 | Natural Vitamin B-12 ‡ | 60 ct | 500 mcg | \$11.00 |
| 2083 | Natural Vitamin B-12, Sublingual ‡ | 60 ct | 5,000 mcg | \$19.75 |
| 2079 | Natural Vitamin B-Complex ‡ | 100 ct | | \$11.00 |
| 2084 | Natural Vitamin C ‡ | 100 ct | 1,000 mg | \$15.25 |
| 2085 | Natural Vitamin C with Rose Hips ‡ | 60 ct | 1,500 mg | \$16.50 |
| 2077 | Natural Vitamin D3 ‡ | 100 ct | 1,000 IU | \$11.00 |
| 2078 | Natural Vitamin D3 ‡ | 60 ct | 5,000 IU | \$13.25 |
| 2087 | Natural Vitamin E, Soft Gels ‡ | 30 ct | 1,000 IU | \$13.25 |

| Item # | Product Name | Packaging | Strength | Price |
|---------------------|---|-----------|-----------|---------|
| 2086 | Natural Vitamin E, Soft Gels ‡ | 90 ct | 400 IU | \$13.25 |
| 2090 | Natural Zinc ‡ | 100 ct | 50 mg | \$11.00 |
| 1378 | Niacin ‡ | 100 ct | 100 mg | \$6.50 |
| 1394 | Niacin ‡ | 100 ct | 500 mg | \$11.00 |
| 1930 | Niacin, No Flush ‡ | 60 ct | 500 mg | \$14.25 |
| 1886 | One Daily Men's Multivitamin ‡ | 100 ct | | \$11.00 |
| 1887 | One Daily Women's Multivitamin ‡ | 100 ct | | \$11.00 |
| 2162 | Osteo Bi Flex Triple Strength 80 ct ‡ | 80 ct | | \$37.25 |
| 1977 | Potassium Gluconate ‡ | 100 ct | 595 mg | \$6.50 |
| 1395 | Rena-Vite ‡ | 100 ct | | \$14.75 |
| 1392 | Senior Multivitamin ‡ | 90 ct | | \$12.00 |
| 1734 | Stress Formula Tablets with Zinc ‡ | 60 ct | | \$11.00 |
| 2234 | Turmeric with Ginger and Black Pepper Gummy ‡ | 60 ct | | \$13.25 |
| 1735 | Vitafusion Fiber Weight Management ‡ | 90 ct | | \$19.25 |
| 1379 | Vitamin A ‡ | 100 ct | 10,000 IU | \$8.75 |
| 1016 | Vitamin B-1 ‡ | 100 ct | 100 mg | \$8.25 |
| 1388 | Vitamin B-6 ‡ | 100 ct | 100 mg | \$8.75 |
| 1389 | Vitamin B-12 ‡ | 100 ct | 500 mcg | \$6.50 |
| 1381 | Vitamin B-12 ‡ | 100 ct | 1,000 mcg | \$11.00 |
| 1974 | Vitamin B-12, Sublingual ‡ | 30 ct | 5,000 mcg | \$11.00 |
| 1382 | Vitamin B-Complex ‡ | 100 ct | | \$8.75 |
| 1915 | Vitamin B-Complex Gummy ‡ | 70 ct | | \$14.25 |
| 1017 | Vitamin C ‡ | 100 ct | 500 mg | \$8.25 |
| 1706 | Vitamin C ‡ | 110 ct | 1,000 mg | \$12.00 |
| 1916 | Vitamin C Gummy ‡ | 60 ct | 125 mg | \$13.25 |
| 1390 | Vitamin D3 ‡ | 100 ct | 1,000 IU | \$9.25 |
| 1973 | Vitamin D3 ‡ | 100 ct | 5,000 IU | \$11.00 |
| 1978 | Vitamin D3 Gummy ‡ | 120 ct | 1,000 IU | \$14.25 |
| 1391 | Vitamin E, Soft Gels ‡ | 100 ct | 100 IU | \$6.50 |
| 1384 | Vitamin E, Soft Gels ‡ | 110 ct | 400 IU | \$11.00 |
| 1419 | Zinc Chelated ‡ | 110 ct | 50 mg | \$7.75 |
| WART REMOVER | | | | |
| 1288 | Dr. Scholl's Wart Removal System | 24 ct | | \$16.50 |
| 1075 | Wart Remover, Liquid | 9 ml | 17% | \$11.00 |

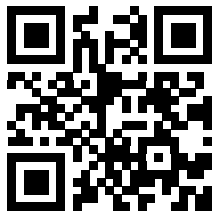
NOTICES



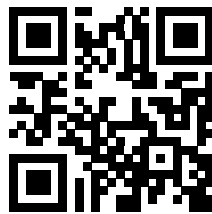
- If you disenroll from Mass Advantage Health Plan, your OTC benefit will automatically terminate.
- Mass Advantage is a Medicare Advantage organization with a Medicare contract offering HMO and PPO plans. Enrollment in Mass Advantage depends on contract renewal.
- This information is available for free in other languages. Please call our customer service number 8 a.m. to 8 p.m., seven days a week from October 1 through March 31 and 8 a.m. to 8 p.m., Monday through Friday from April 1 through September 30 at 1-844-915-0234 (TTY: 711).
- The health information provided in the catalog is general in nature and is not medical advice or a substitute for professional health care.
- Some product costs may exceed benefit allowances and may not be affordable for some members.

* Part B/D - Under certain circumstances some items may be covered under either Part B or Part D. When you are eligible to receive these items under Part B or Part D you may not purchase these items through your Part C supplemental OTC benefit. For your convenience, we've marked these items with an (*).

‡ Dual-purpose items are medicines and products that can be used for either a medical condition or for general health and well-being. In order to purchase these items under your plan, your personal physician must recommend them to you for a specific diagnosed condition. Please speak to your physician before ordering these items.



**Download the
Mobile App**



Order Online



MASS ADVANTAGE

www.MassAdvantageOTC.com

STEP 2 - PRODUCT SELECTION (Continued)

Cash, checks, credit cards, or money orders are not accepted under this OTC benefit.

| Item # | Product | Quantity | Unit Price | TOTAL |
|-------------|----------------------|----------------------|--|--|
| 4 | <input type="text"/> | <input type="text"/> | \$ <input type="text"/> . <input type="text"/> | \$ <input type="text"/> . <input type="text"/> |
| 5 | <input type="text"/> | <input type="text"/> | \$ <input type="text"/> . <input type="text"/> | \$ <input type="text"/> . <input type="text"/> |
| 6 | <input type="text"/> | <input type="text"/> | \$ <input type="text"/> . <input type="text"/> | \$ <input type="text"/> . <input type="text"/> |
| 7 | <input type="text"/> | <input type="text"/> | \$ <input type="text"/> . <input type="text"/> | \$ <input type="text"/> . <input type="text"/> |
| 8 | <input type="text"/> | <input type="text"/> | \$ <input type="text"/> . <input type="text"/> | \$ <input type="text"/> . <input type="text"/> |
| 9 | <input type="text"/> | <input type="text"/> | \$ <input type="text"/> . <input type="text"/> | \$ <input type="text"/> . <input type="text"/> |
| 10 | <input type="text"/> | <input type="text"/> | \$ <input type="text"/> . <input type="text"/> | \$ <input type="text"/> . <input type="text"/> |
| 11 | <input type="text"/> | <input type="text"/> | \$ <input type="text"/> . <input type="text"/> | \$ <input type="text"/> . <input type="text"/> |
| 12 | <input type="text"/> | <input type="text"/> | \$ <input type="text"/> . <input type="text"/> | \$ <input type="text"/> . <input type="text"/> |
| 13 | <input type="text"/> | <input type="text"/> | \$ <input type="text"/> . <input type="text"/> | \$ <input type="text"/> . <input type="text"/> |
| 14 | <input type="text"/> | <input type="text"/> | \$ <input type="text"/> . <input type="text"/> | \$ <input type="text"/> . <input type="text"/> |
| 15 | <input type="text"/> | <input type="text"/> | \$ <input type="text"/> . <input type="text"/> | \$ <input type="text"/> . <input type="text"/> |
| 16 | <input type="text"/> | <input type="text"/> | \$ <input type="text"/> . <input type="text"/> | \$ <input type="text"/> . <input type="text"/> |
| 17 | <input type="text"/> | <input type="text"/> | \$ <input type="text"/> . <input type="text"/> | \$ <input type="text"/> . <input type="text"/> |
| 18 | <input type="text"/> | <input type="text"/> | \$ <input type="text"/> . <input type="text"/> | \$ <input type="text"/> . <input type="text"/> |
| Subtotal \$ | | | | <input type="text"/> . <input type="text"/> |

A new order form will be provided with your shipment and additional forms can be printed at www.MassAdvantageOTC.com.

Please mail the completed form back in the postage-paid envelope provided.

If you place your order using an order form, your order total will be applied to the month in which we receive your form. For example, if you mail your order form on June 29th, but we receive it on July 1st, your order total will be applied to your July benefit, not your June benefit.